



**Attention: Before operating BSB-1900 Special clean booth, user must read this operating manual carefully, please! Keeping the manual for reference.**

## **BSB-1900 Special Clean Booth**

# **OPERATING MANUAL**

ISO9001: 2000 CERTIFIED

**SUZHOU CLEANING TECH. RESEARCH INSTITUTE**

**BAISHEN TECHNOLOGY (SUZHOU) CO., LTD.**

**Welcome to use BSB-1900 Special clean booth, thank you warmly entering into our company's consumer team!**

## 1.General

Along with science and technology's developing rapidly, air clean technology has already been used extensively in production and scientific research department of electron, spaceflight, aviation, precision instrument, apparatus & meter, chemical industry, light industry, medicine and foodstuff.

The Clean booth is a kind of vertical unidirectional airflow cleaning device, It offers great effects on improving technical conditions and raising the accuracy purity and reality of the products. Along with science technical rapidly develop, air clean technology already cover extensively should be used for laboratory, electron technology, aviation and space, precision instrument.

## 2 Technical specifications

model Parameter		BSB-1900
Cleanliness		100 class (@ $\geq 0.5 \mu m$ FS 209E)
Mean falling bacteria		$\leq 0.5$ piece / culture container. Hour ( $\phi$ 90mm culture container )
Mean flow rate (m/s)		0.3~0.6 (adjustable)
Vibration/half peak ( $\mu m$ )		$\leq 5 \mu m$
Noise level		$\leq 65$ dB (A)
Power supply		220V/50Hz
Maximum power consumption(VA)		850VA
Illumination (Lx)		$\geq 300$ Lx
Weight (kg)		180kg
Dimension(mm)	W1	1900
	D1	1100
	H1	1360
	W	1810
	D	1100
	H	880
Primary Filter		$913 \times 219 \times 15 \times \textcircled{1}$ , $450 \times 219 \times 15 \times \textcircled{1}$
Size & No.of HEPA		$820 \times 1470 \times \textcircled{1}$
Size & No.of Light UV lamp		$30W \times \textcircled{2}$ pieces

Annotate: thick of falter can be selected 50 or 69mm.

### 3 Operating Principle

BSB-1900 Special clean booth adapt vertical flow theory, put the low noise centrifugal blower, static pressure chamber HEPA gether together as a unit.

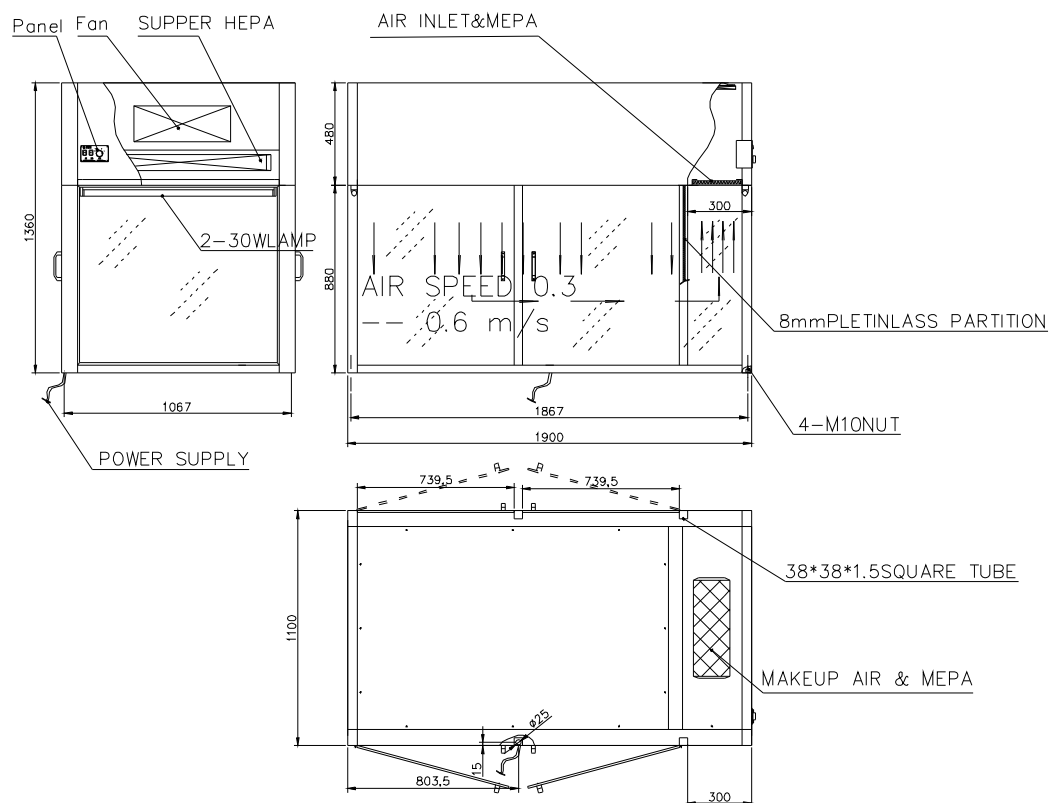
When the air passes into the static pressure chamber by a centrifugal blower, the cleaning flow through the outlet of the HEPA with a mean and certain crosscut velocity.

BSB-1900 Special laminar clean booth features specialty return air and operating area users can use selecting plywood circle, a few air enter to makeup air inlet, put into these areas to form return flow.

The product adopts the fission structure, upper part structure all adopt stainless steel, and rivet connection technology, no deform, more beautiful.

The blower adopts low noise, high quantity type blower, air speed can according to consumer requirement to select high, in, low ranges.

The products be equipped with ultra-violet lamp (option), make it applicability extensive.



## **4.Installation**

- 4.1 His device must be installed in the cleaning room (100000class at lowest)
- 4.2 Please confirm that this product's rated voltage, frequency conform to power supply's parameter, prevent electric element and device from damage and lead to fire.
- 4.3 The power cord must be connecting to the socket which is grounded.

## **5.Usage**

- 5.1 Turn-on the power supply, open the ultraviolet bacteria-killer lamp, after 30 minutes, close ultraviolet bacteria-killer lamp and open the fluorescent lamp. Then, switch on the flow motor and start operating after 20 minutes, open the fluorescent lamp when operating
- 5.2 If the working cabin has not been used for a long time, before operating its circle must be cleaned with super vacuum cleaners or other tools, which cannot make fiber. At last bactericidal agent or ultraviolet rays should be used to kill the bacteria.
- 5.3 Unnecessary things are not allowed to be put on the working table to assure the cleaning flow track in the working range not to be disturbed.
- 5.4 In the cleaning operating range any obvious action to disturb the flow track is not allowed.
- 5.5 Operating area's usage temperature can not be more than 60 ℃ .

## **6.Maintenance**

- 6.1 According to environmental clean extent, the coarse filter cloth should be regularly (generally every 2-3months) cleaned by removing (Dacron non-woven cloth) or replacing.
- 6.2 it must be replaced HEPA when the high-speed range of fan could not make working area wind speed reach to 0.30m/s,
- 6.3 when replacing fuse, ensure capacity same as original to avoid fire.
- 6.4 when checking and maintenance, please cut off power switch and pull out the

power plug.

## 7 Operation panel function illustrate



Remark: if it has dimension deflection, according to upgrade version.

**BSB-1900 Special clean booth  
OPERATING MANUAL**

**SUZHOU CLEANING TECH. RESEARCH INSTITUTE  
BAISHEN TECHNOLOGY (SUZHOU) CO., LTD.**

---

Add: 31 Qihong Road, Tongyuan Road ,SIP Suzhou

Zip: 215006

Phone: +86-512-62522538

Fax: +86-512-62522938

[http: //www.baishen.com](http://www.baishen.com)

E-mail: [clean@baishen.com](mailto:clean@baishen.com)

2004 Printed in Suzhou